



## Product Model Number

CKO-CC20-075026-0403

### ✓ Model Number Definitions

**CKO-XXXX-XXXXXX-XXXX**

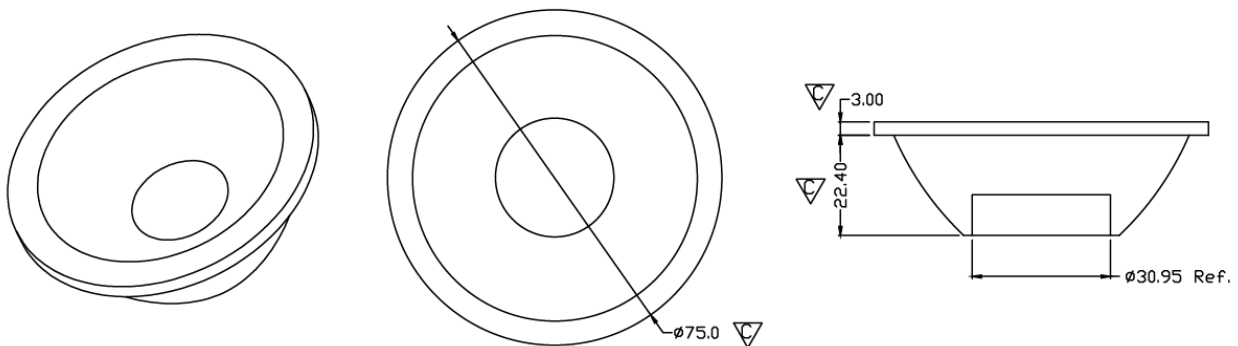


- A. Chun Kuang Optics Corp. Product
- B. Product Type: product abbreviation  
Ex:  
CH→CoB High Intensity  
CC→CoB Compact  
CS→Soft Shading for CoB LED  
HC→Holder for CoB LED

- C. Identity Code
- D. Lens / Fixture Size  
Ex: 075026=Φ75mm / Thickness=26mm (round up)
- E. Serial Numbers

The lens datasheet is applicable for **TRIDONICLED**, that manufactured by Chun Kuang Optics Corp.

### ✓ Dimensions (mm) : Φ75 x 25.4



▽:Critical Dimension



✓ Optical Characteristics – Angle Performances

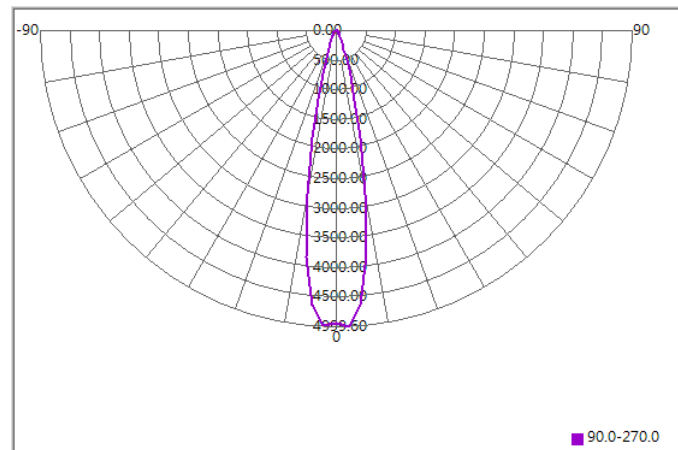
TRIDONIC	LED LES (mm)	FWHM (degrees)	Field Angle (degrees)
SLE G7 09mm 1200lm 940 R ADV	Φ9	21°	40°
SLE G7 13mm 3000lm 930 R ADV	Φ13	24°	47°



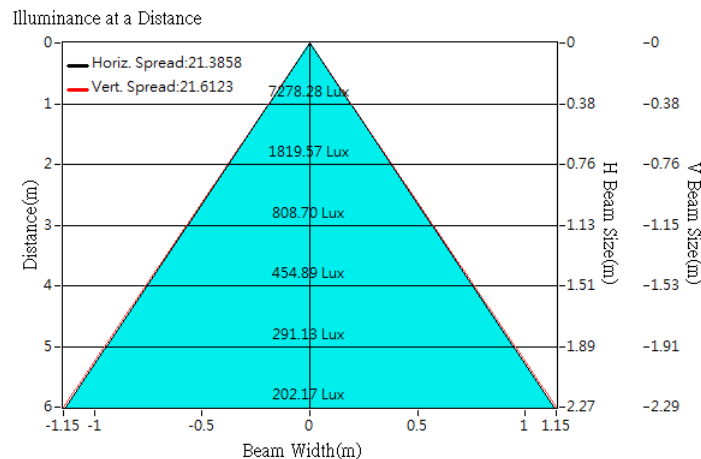
## Optical Characteristics

Model Number	CKO-CC20-075026-0403		<p>"H" definition</p> <p>LES CoB</p>
LED	<b>SLE G7 09mm 1200lm 940 R ADV</b>		
LES / LED Size	Φ 9 mm		
FWHM (D50)	21°		
Field Angle (D10)	40°		
H (distance)	3.65 mm		
Dimension	Φ =75mm, Thickness=25.4 mm		
Luminous Flux	1473 lm	Measured @ 12.4 W	
Material	PC / UL94V2		

## cd/klm



## Illuminance At Distances

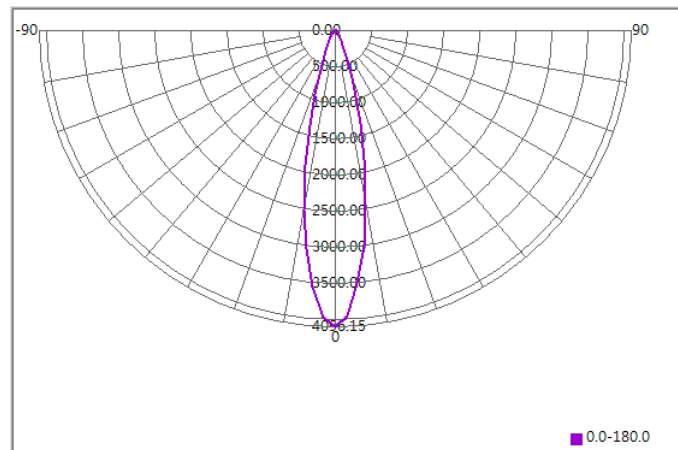




## Optical Characteristics

Model Number	CKO-CC20-075026-0403		<p>"H" definition</p>
LED	<b>SLE G7 13mm 3000lm 930 R ADV</b>		
LES / LED Size	Φ 13 mm		
FWHM (D50)	24°		
Field Angle (D10)	47°		
H (distance)	3.65 mm		
Dimension	Φ =75mm, Thickness=25.4 mm		
Luminous Flux	2086 lm	Measured @ 17.3 W	
Material	PC / UL94V2		

## cd/klm



## Illuminance At Distances

