



## Product Model Number

CKO-CH15-045021-1602

### ✓ Model Number Definitions

**CKO-XXXX-XXXXXX-XXXX**

↑  
(A)

↑  
(B)

↑  
(C)

↑  
(D)

↑  
(E)

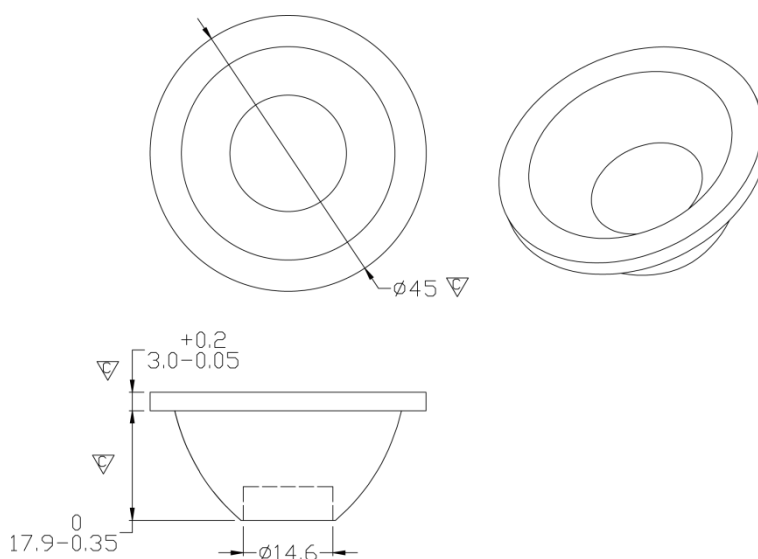


- A. Chun Kuang Optics Corp. Product
- B. Product Type: product abbreviation  
Ex:  
CH→CoB High Intensity  
CC→CoB Compact  
CS→Soft Shading for CoB LED  
HC→Holder for CoB LED

- C. Identity Code
- D. Lens / Fixture Size  
Ex: 075026=Φ75mm / Thickness=26mm (round up)
- C. Serial Numbers

The lens datasheet is applicable for **Lumileds LED**, that manufactured by Chun Kuang Optics Corp.

### ✓ Dimensions (mm) : Φ45 x 20.9

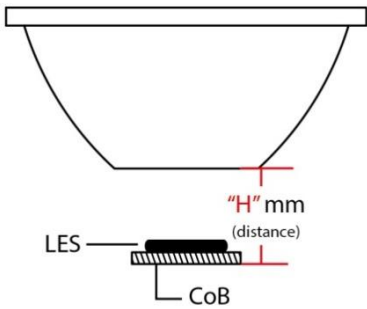


▽:Critical Dimension

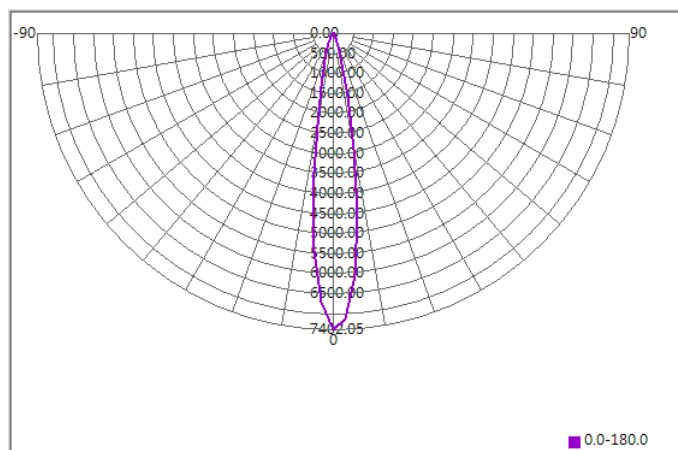
[illegible]



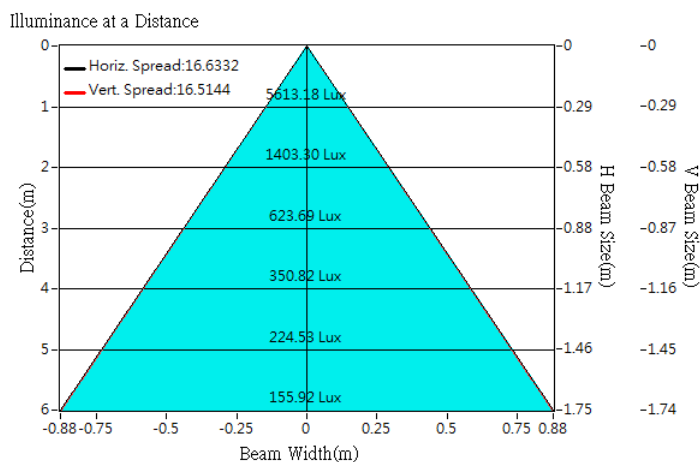
## Optical Characteristics

Model Number	CKO-CH15-045021-1602		
LED	LUXEON 1202s		
LES / LED Size	Φ 6.5 mm		
FWHM (D50)	16°		
Field Angle (D10)	34°		
H (distance)	2.5mm		
Dimension	Φ =45 mm, Thickness=20.9 mm		
Luminous Flux	758 lm	Measured @7.0 W	
Material	PC / UL94V2		

## cd/klm



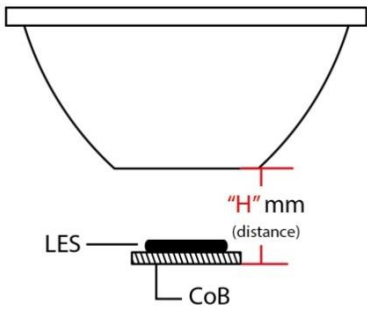
## Illuminance At Distances



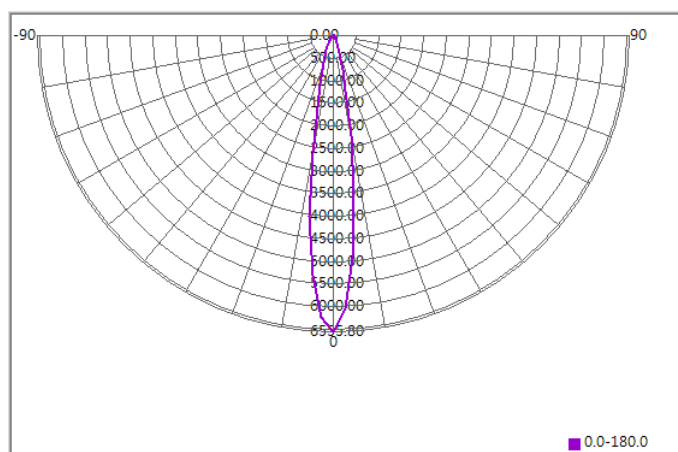




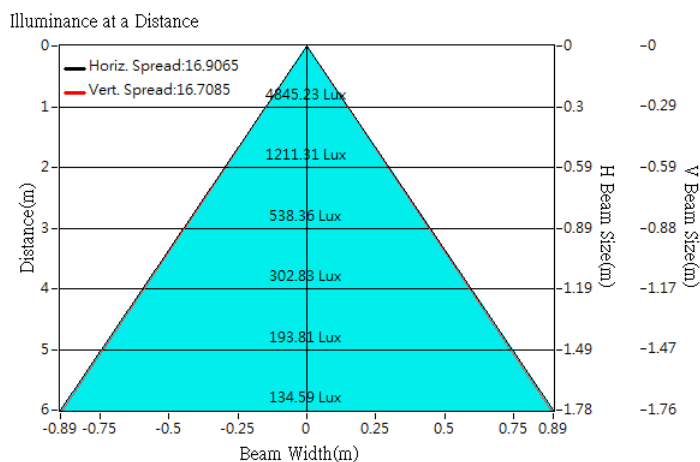
## Optical Characteristics

Model Number	CKO-CH15-045021-1602		
LED	LUXEON 1202 HD		
LES / LED Size	Φ 6.5 mm		
FWHM (D50)	16°		
Field Angle (D10)	36°		
H (distance)	2.5mm		
Dimension	Φ =45 mm, Thickness=20.9 mm		
Luminous Flux	739 lm	Measured @6.9 W	
Material	PC / UL94V2		

## cd/klm

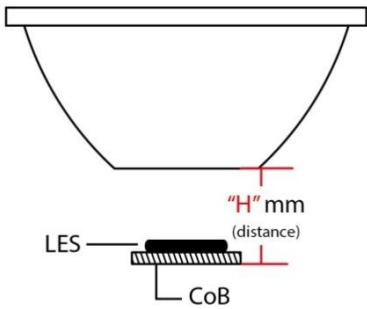


## Illuminance At Distances

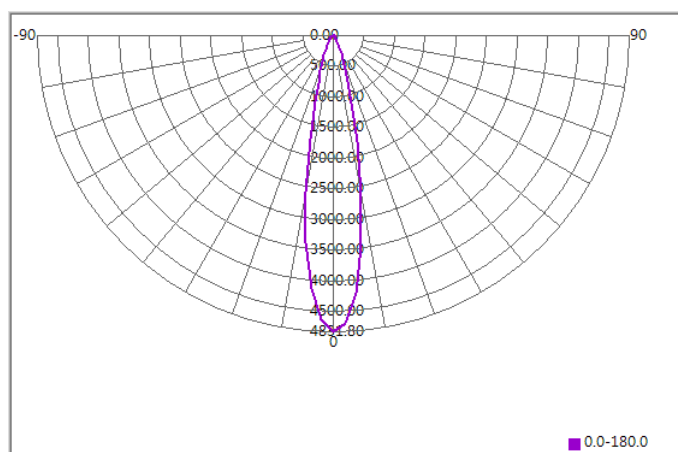




## Optical Characteristics

Model Number	CKO-CH15-045021-1602		<div></div>
LED	LUXEON 1203		
LES / LED Size	Φ 9 mm		
FWHM (D50)	21°		
Field Angle (D10)	44°		
H (distance)	2.5mm		
Dimension	Φ =45 mm, Thickness=20.9 mm		
Luminous Flux	815 lm	Measured @ 10.9W	
Material	PC / UL94V2		

## cd/klm



## Illuminance At Distances

