



Product Model Number

CKO-CH15-060027-4301

✓ Model Number Definitions

CKO-XXXX-XXXXXX-XXXX

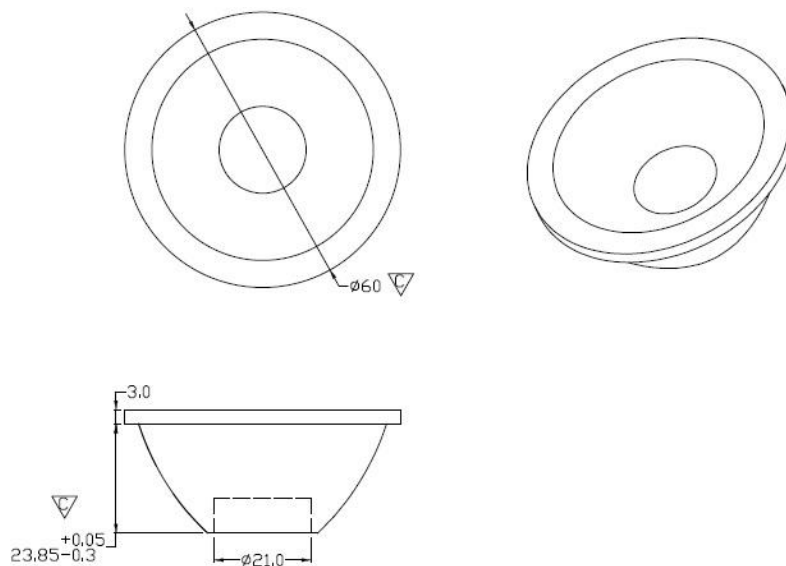


- A. Chun Kuang Optics Corp. Product
- B. Product Type: product abbreviation
Ex:
CH→CoB High Intensity
CC→CoB Compact
CS→Soft Shading for CoB LED
HC→Holder for CoB LED

- C. Identity Code
- D. Lens / Fixture Size
Ex: 075026=Φ75mm / Thickness=26mm (round up)
- C. Serial Numbers

The lens datasheet is applicable for **Lumileds LED**, that manufactured by Chun Kuang Optics Corp.

✓ Dimensions (mm) : Φ60 x 26.85



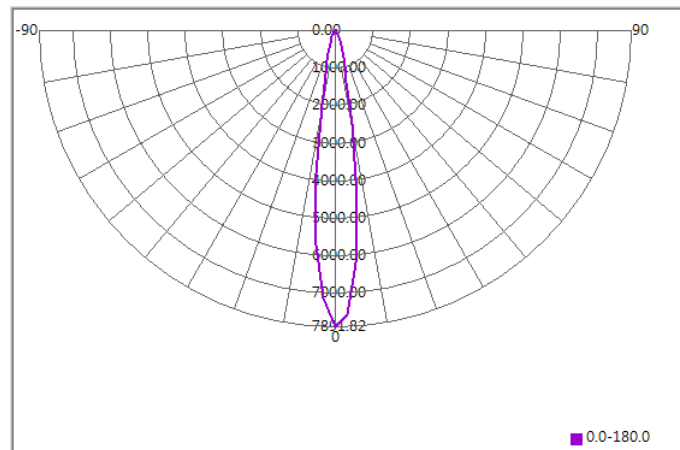
▽:Critical Dimension



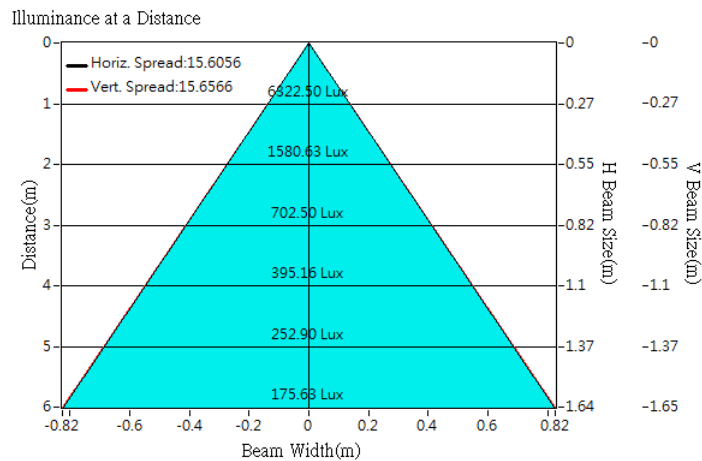
Optical Characteristics

Model Number	CKO-CH15-060027-4301		<p>"H" definition</p> <p>LES CoB</p>
LED	LUXEON 1203		
LES / LED Size	Φ 9 mm		
FWHM (D50)	15°		
Field Angle (D10)	33°		
H (distance)	3.65mm		
Dimension	Φ =60 mm, Thickness=26.85 mm		
Luminous Flux	801 lm	Measured @ 10.8 W	
Material	PC / UL94V2		

cd/klm



Illuminance At Distances

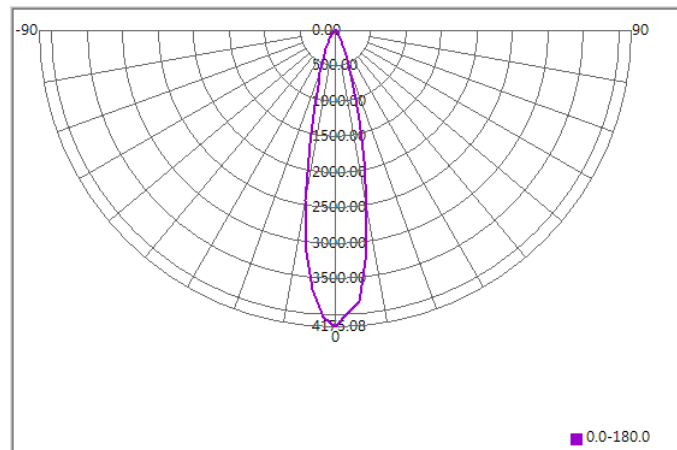




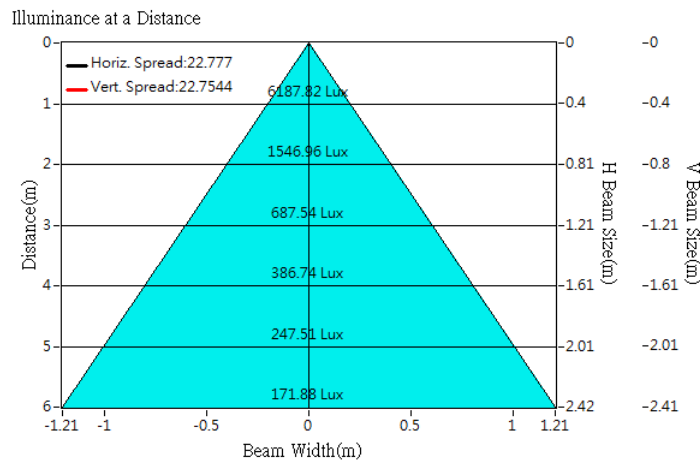
Optical Characteristics

Model Number	CKO-CH15-060027-4301	<p>"H" definition</p> <p>LES CoB</p>
LED	LUXEON 1204	
LES / LED Size	Φ 9 mm	
FWHM (D50)	23°	
Field Angle (D10)	47°	
H (distance)	3.65mm	
Dimension	Φ =60 mm, Thickness=26.85 mm	
Luminous Flux	1482 lm	
Material	PC / UL94V2	

cd/klm



Illuminance At Distances

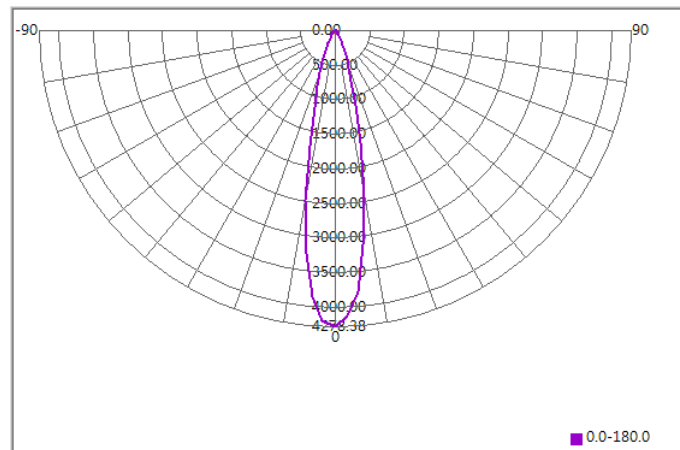




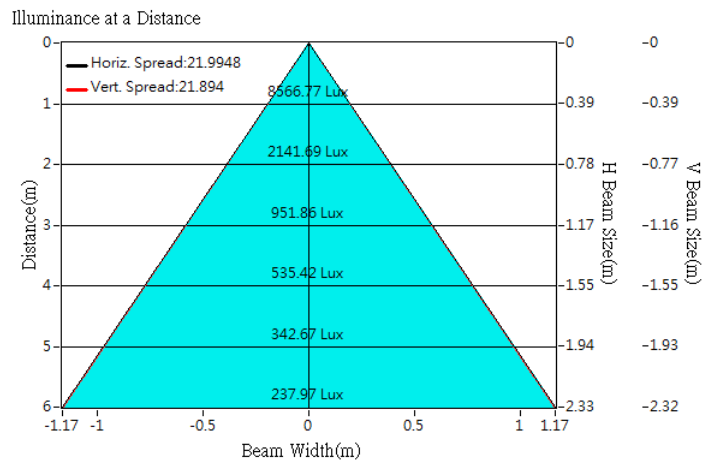
Optical Characteristics

Model Number	CKO-CH15-060027-4301		<p>"H" definition</p> <p>LES CoB</p>
LED	LUXEON 1205		
LES / LED Size	Φ 13 mm		
FWHM (D50)	22°		
Field Angle (D10)	47°		
H (distance)	3.65mm		
Dimension	Φ =60 mm, Thickness=26.85 mm		
Luminous Flux	2002 lm	Measured @ 22.1 W	
Material	PC / UL94V2		

cd/klm



Illuminance At Distances

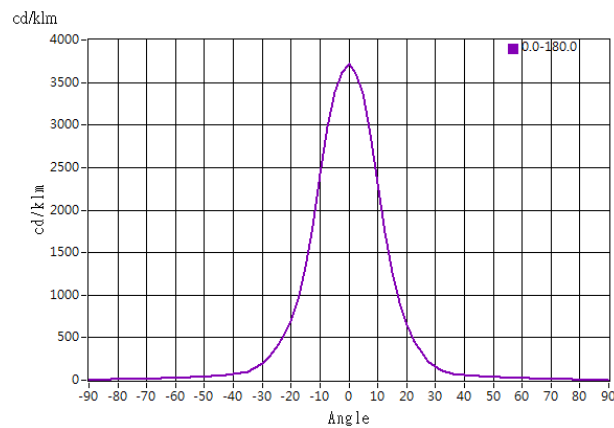




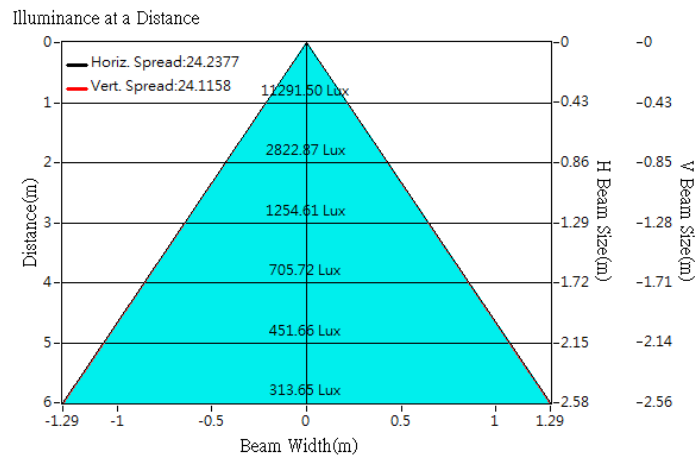
Optical Characteristics

Model Number	CKO-CH15-060027-4301	<p>"H" definition</p>
LED	Luxeon 1208 G5	
LES / LED Size	Φ 15 mm	
FWHM (D50)	24°	
Field Angle (D10)	50°	
H (distance)	3.65mm	
Dimension	Φ =60 mm, Thickness=26.85 mm	
Luminous Flux	3033 lm Measured @ 25.7 W	
Material	PC / UL94V2	

cd/klm

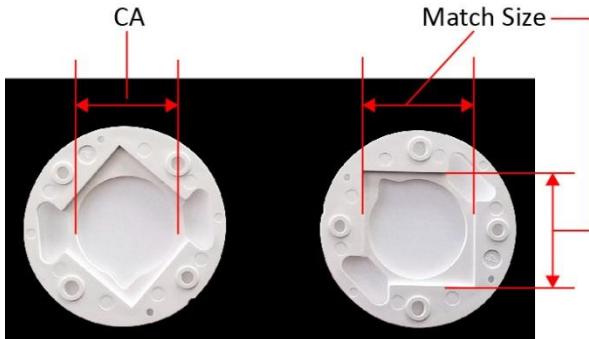


Illuminance At Distances





Lens Accessories - CoB Holder



Example of LES Area & LED Size Dimension Locations

Product Model	Match Size (mm)	CA (mm)	Material	Applicability
CKO-HC14-161911-0501	16.3 x 19.3	Φ 11.9	PBT	Lumileds 1202
CKO-HC14-161911-0501	16.3 x 19.3	Φ 11.9	PBT	Lumileds 1203
CKO-HC14-202419-0502	20.3 x 24.3	Φ 19.2	PBT	Lumileds 1204
CKO-HC14-202419-0502	20.3 x 24.3	Φ 19.2	PBT	Lumileds 1205