



Product Model Number

CKO-CH15-060027-4350

✓ Model Number Definitions

CKO-XXXX-XXXXXX-XXXX

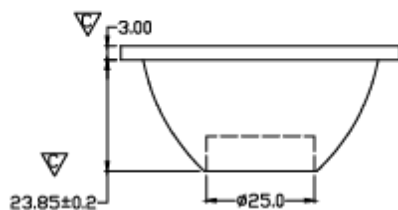
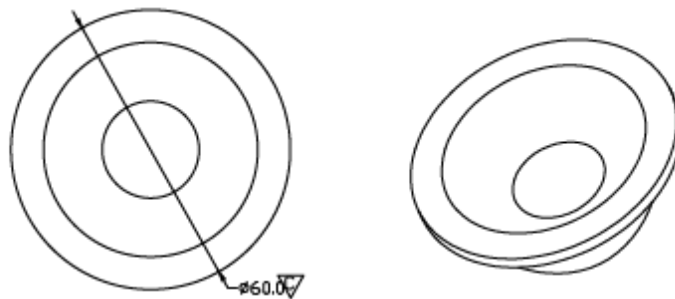


- A. Chun Kuang Optics Corp. Product
- B. Product Type: product abbreviation
Ex:
CH→CoB High Intensity
CC→CoB Compact
CS→Soft Shading for CoB LED
HC→Holder for CoB LED

- C. Identity Code
- D. Lens / Fixture Size
Ex: 075026=Φ75mm / Thickness=26mm (round up)
- C. Serial Numbers

The lens datasheet is applicable for **Luminus LED**, that manufactured by Chun Kuang Optics Corp.

✓ Dimensions (mm) : Φ60 x 26.85



▽:Critical Dimension



✓ **Optical Characteristics – Angle Performances**

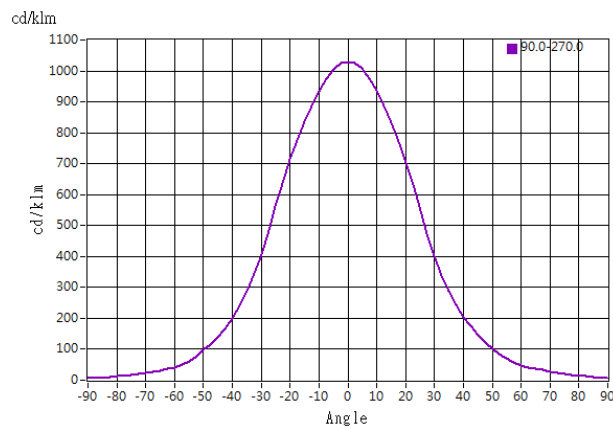
| Luminus | LED LES (mm) | FWHM (degrees) | Field Angle (degrees) |
|-------------|--------------|----------------|-----------------------|
| CXM-9-AC30 | Φ9.6 | 53° | 100° |
| CXM-9-AC40 | Φ9.8 | 54° | 101° |
| CXM-11-AC30 | Φ11.7 | 54° | 102° |
| CLM-14-AC40 | Φ14.5 | 54° | 103° |
| | | | |
| | | | |
| | | | |
| | | | |
| | | | |
| | | | |
| | | | |
| | | | |
| | | | |
| | | | |
| | | | |
| | | | |
| | | | |
| | | | |
| | | | |
| | | | |
| | | | |
| | | | |
| | | | |



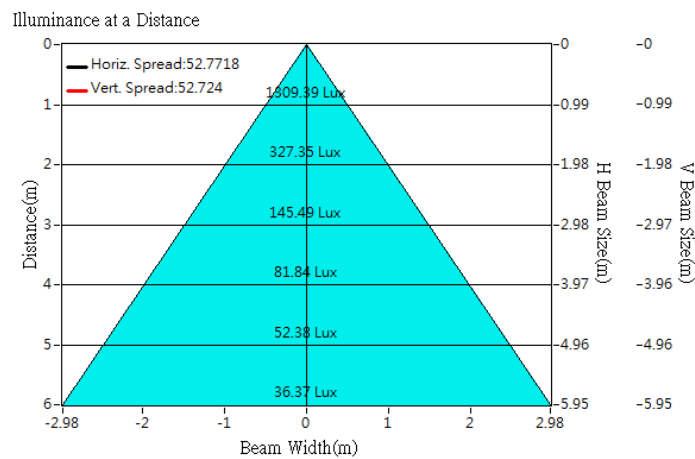
Optical Characteristics

| | | |
|-------------------|------------------------------|-----------------------|
| Model Number | CKO-CH15-060027-4350 | <p>"H" definition</p> |
| LED | CXM-9-AC30 | |
| LES / LED Size | Φ 9.6 mm | |
| FWHM (D50) | 53° | |
| Field Angle (D10) | 100° | |
| H (distance) | 3.65mm | |
| Dimension | Φ =60 mm, Thickness=26.85 mm | |
| Luminous Flux | 1275 lm | |
| Material | PC / UL94V2 | |

cd/klm



Illuminance At Distances

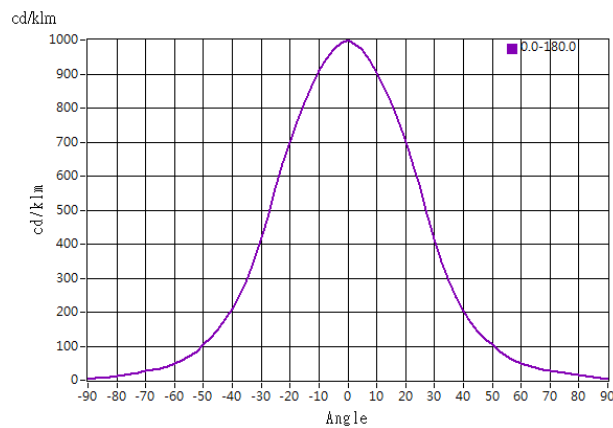




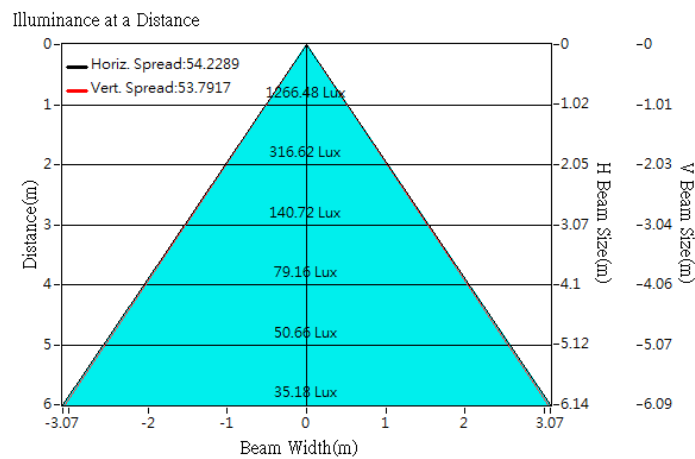
Optical Characteristics

| | | |
|-------------------|------------------------------|-----------------------|
| Model Number | CKO-CH15-060027-4350 | <p>"H" definition</p> |
| LED | CXM-9-AC40 | |
| LES / LED Size | Φ 9.8 mm | |
| FWHM (D50) | 54° | |
| Field Angle (D10) | 101° | |
| H (distance) | 3.65mm | |
| Dimension | Φ =60 mm, Thickness=26.85 mm | |
| Luminous Flux | 1267 lm | |
| Material | PC / UL94V2 | |

cd/klm



Illuminance At Distances

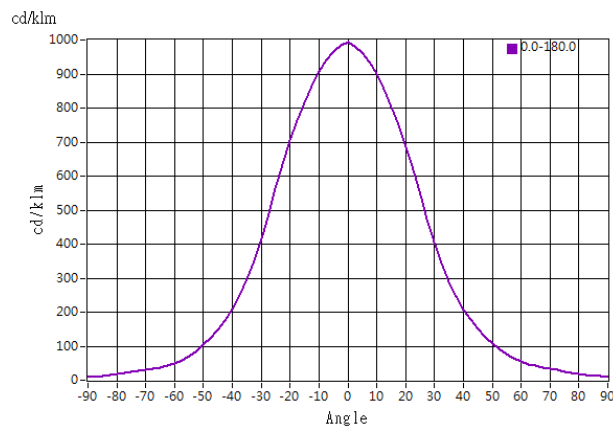




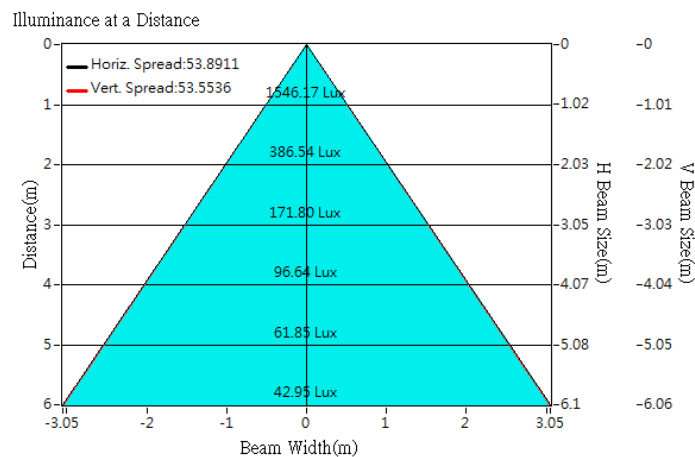
Optical Characteristics

| | | |
|-------------------|------------------------------|-----------------------|
| Model Number | CKO-CH15-060027-4350 | <p>"H" definition</p> |
| LED | CXM-11-AC30 | |
| LES / LED Size | Φ 11.7 mm | |
| FWHM (D50) | 54° | |
| Field Angle (D10) | 102° | |
| H (distance) | 3.65mm | |
| Dimension | Φ =60 mm, Thickness=26.85 mm | |
| Luminous Flux | 1554 lm | |
| Material | PC / UL94V2 | |

cd/klm

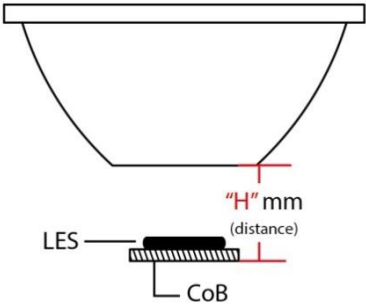


Illuminance At Distances

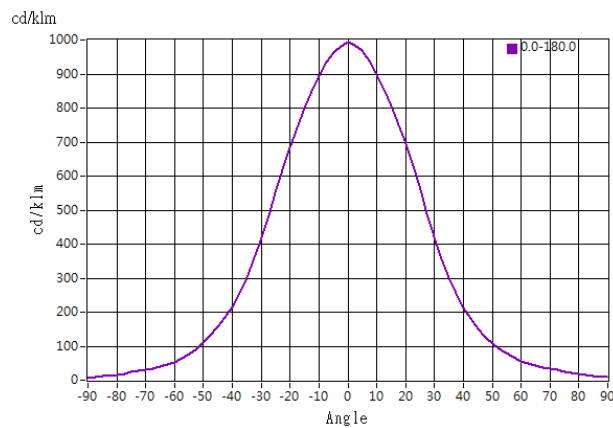




Optical Characteristics

| | | |
|-------------------|--------------------------------|--|
| Model Number | CKO-CH15-060027-4350 | <p>"H" definition</p>  |
| LED | CLM-14-AC40 | |
| LES / LED Size | Φ 14.5 mm | |
| FWHM (D50) | 54° | |
| Field Angle (D10) | 103° | |
| H (distance) | 3.65mm | |
| Dimension | Φ =60 mm, Thickness=26.85 mm | |
| Luminous Flux | 2335 lm Measured @ 16.7 W | |
| Material | PC / UL94V2 | |

cd/klm



Illuminance At Distances

