



Product Model Number

CKO-CH15-092043-2301

✓ Model Number Definitions

CKO-XXXX-XXXXXX-XXXX

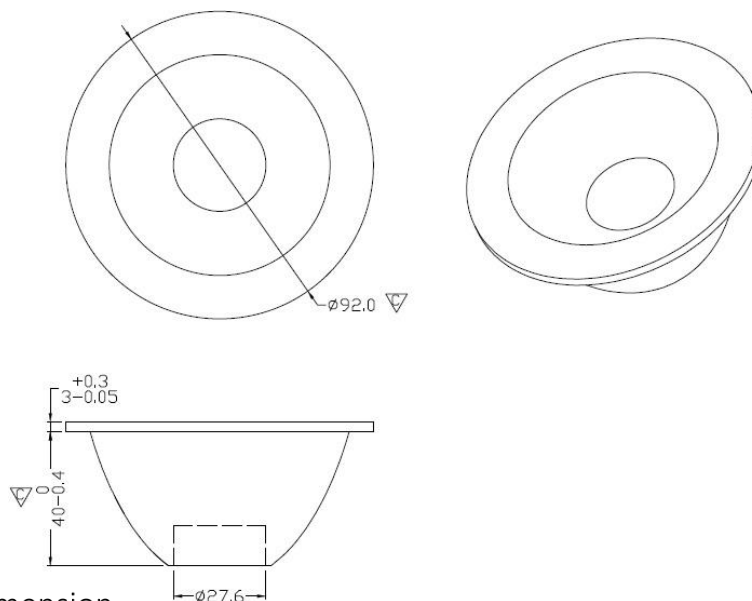


- A. Chun Kuang Optics Corp. Product
- B. Product Type: product abbreviation
Ex:
CH→CoB High Intensity
CC→CoB Compact
CS→Soft Shading for CoB LED
HC→Holder for CoB LED

- C. Identity Code
- D. Lens / Fixture Size
Ex: 075026=Φ75mm / Thickness=26mm (round up)
- C. Serial Numbers

The lens datasheet is applicable for **Citizen LED**, that manufactured by Chun Kuang Optics Corp.

✓ Dimensions (mm) : Φ92 x 43



▽:Critical Dimension



✓ **Optical Characteristics – Angle Performances**

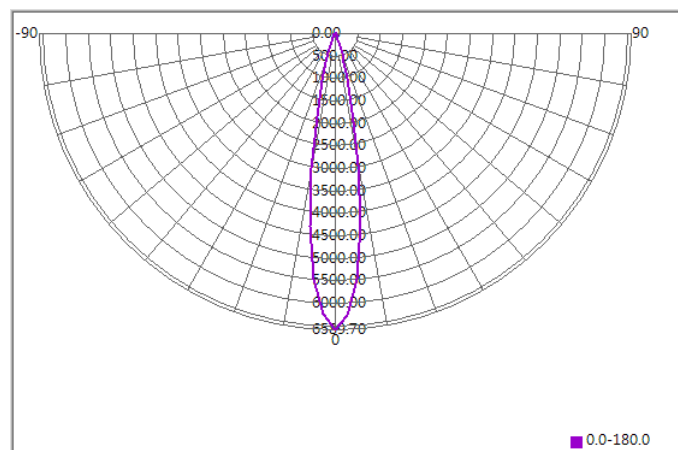
Citizen	LED LES (mm)	FWHM (degrees)	Field Angle (degrees)
CLU 720	Φ11	18°	35°
CLU 730	Φ13	21°	39°
CLU 038	Φ14.5	21°	40°



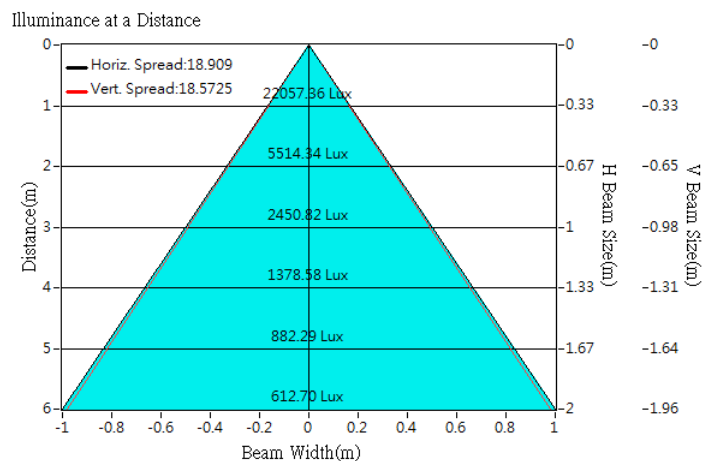
Optical Characteristics

Model Number	CKO-CH15-092043-2301		<p>"H" definition</p>
LED	CLU 720		
LES / LED Size	Φ 11 mm		
FWHM (D50)	18°		
Field Angle (D10)	35°		
H (distance)	3.65 mm		
Dimension	Φ =92 mm, Thickness=43 mm		
Luminous Flux	3347 lm	Measured @ 39.0 W	
Material	PC / UL94V2		

cd/klm



Illuminance At Distances

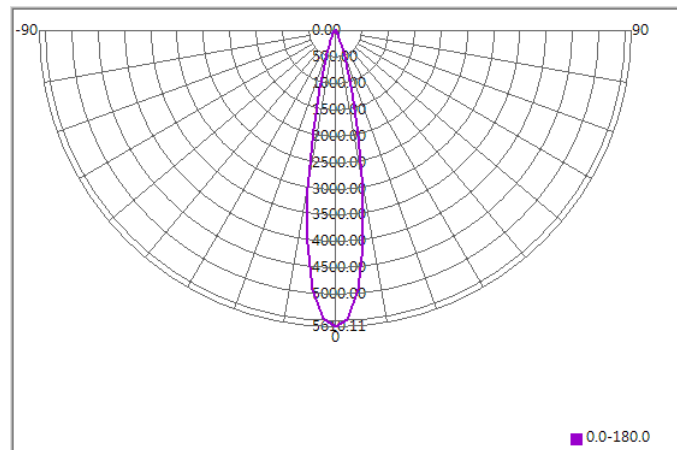




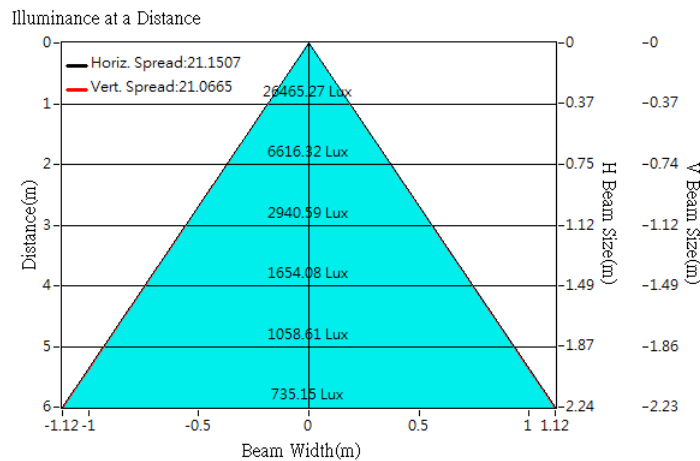
Optical Characteristics

Model Number	CKO-CH15-092043-2301		<p>"H" definition</p>
LED	CLU 730		
LES / LED Size	Φ 13 mm		
FWHM (D50)	21°		
Field Angle (D10)	39°		
H (distance)	3.65 mm		
Dimension	Φ =92 mm, Thickness=43 mm		
Luminous Flux	4717 lm	Measured @ 65.5W	
Material	PC / UL94V2		

cd/klm



Illuminance At Distances

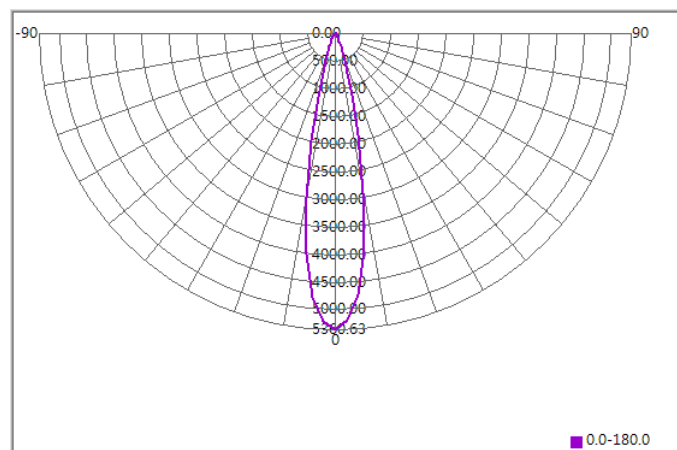




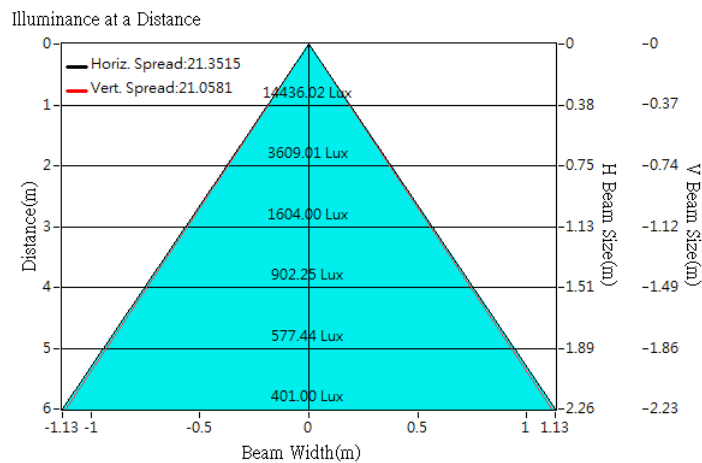
Optical Characteristics

Model Number	CKO-CH15-092043-2301		<p>"H" definition</p>
LED	CLU 038		
LES / LED Size	Φ 14.5 mm		
FWHM (D50)	21°		
Field Angle (D10)	40°		
H (distance)	3.65 mm		
Dimension	Φ =92 mm, Thickness=43 mm		
Luminous Flux	2692 lm	Measured @25 W	
Material	PC / UL94V2		

cd/klm

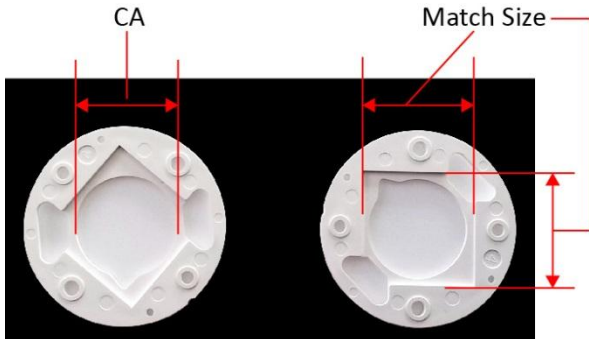


Illuminance At Distances





Lens Accessories - CoB Holder



Example of LES Area & LED Size Dimension Locations

Product Model	Match Size (mm)	CA (mm)	Material	Applicability
CKO-HC13-131311-6416	13.8 x 13.8	Φ 11.6	PBT	Citizen CLL020
CKO-HC13-191917-6417	19.3 x 19.3	Φ 17.4	PBT	Citizen CLL030
CKO-HC13-282824-6418	28.3 x 28.3	Φ 24.9	PBT	Citizen CLL040