

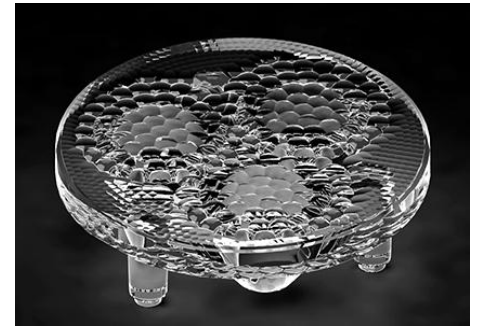


Product Model Number

CKO - M312 - 035011 - 2301

✓ Model Number Definitions

CKO-XXXX-XXXXXX-XXXX

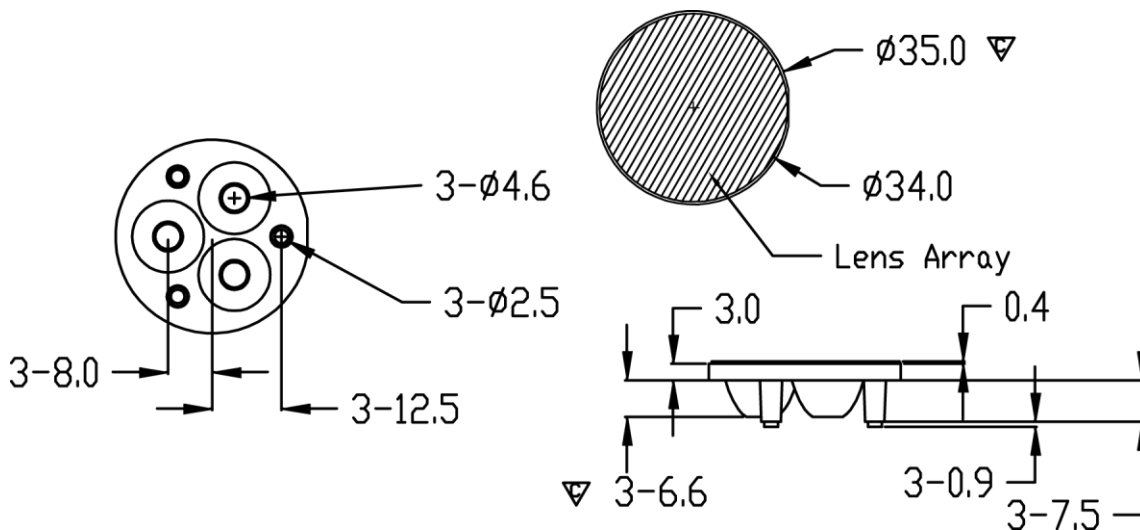


- A. Chun Kuang Optics Corp. Product
- B. Product Type: product abbreviation
Ex:
CH→CoB High Intensity
CC→CoB Compact
CS→Soft Shading for CoB LED
HC→Holder for CoB LED

- C. Identity Code
- D. Lens / Fixture Size
Ex: 075026=Φ75mm / Thickness=26mm (round up)
- E. Serial Numbers

The lens datasheet is applicable for **Lumileds LED**, that manufactured by Chun Kuang Optics Corp.

✓ Dimensions (mm) : Φ35 x 10.9



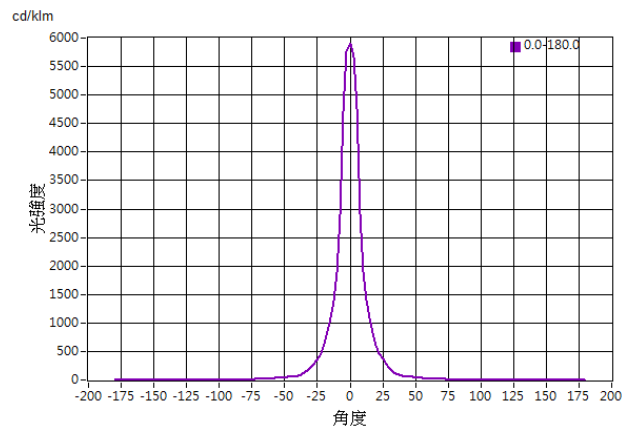
▽:Critical Dimension



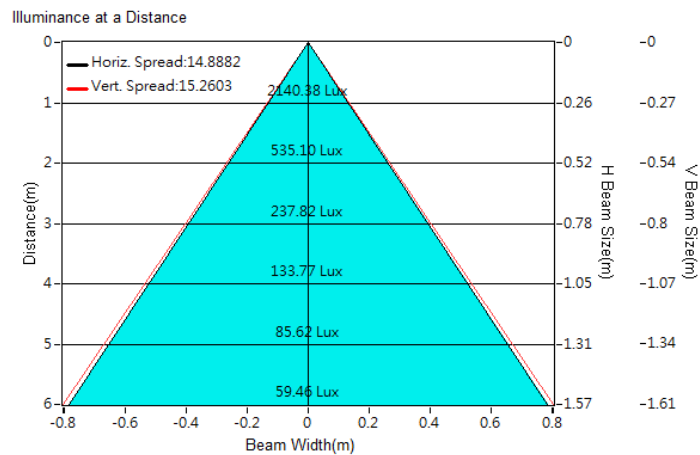
Optical Characteristics

| | | |
|-------------------|-----------------------------|------------------|
| Model Number | CKO-M312-035011-2301 | |
| LED | LUXEON Rebel ES | |
| LES / LED Size | 3 x 4.5 mm | |
| FWHM (D50) | 14° | |
| Field Angle (D10) | 41° | |
| Dimension | Φ =35 mm, Thickness=10.9 mm | |
| Luminous Flux | 363 lm | Measured @ 2.9 W |
| Material | PC / UL94V0 | |

cd/klm



Illuminance At Distances

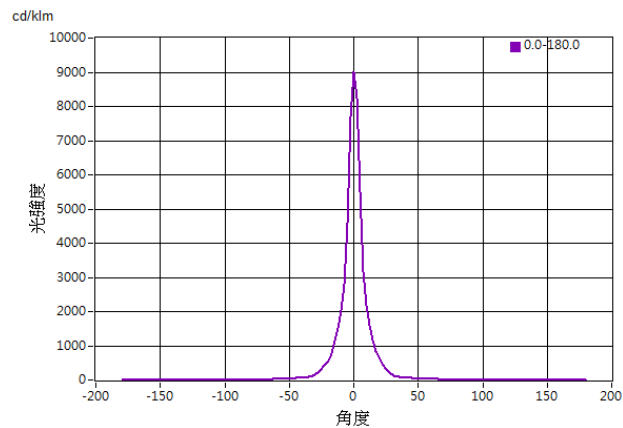




Optical Characteristics

| | | |
|-------------------|-----------------------------|------------------|
| Model Number | CKO-M312-035011-2301 | |
| LED | LUXEON Rebel PLUS | |
| LES / LED Size | 3 x 4.5 mm | |
| FWHM (D50) | 11° | |
| Field Angle (D10) | 34° | |
| Dimension | Φ =35 mm, Thickness=10.9 mm | |
| Luminous Flux | 275 lm | Measured @ 3.2 W |
| Material | PC / UL94V0 | |

cd/klm



Illuminance At Distances

