



Product Model Number

CKO-SA20-075026-0407

✓ Model Number Definitions

CKO-XXXX-XXXXXX-XXXX

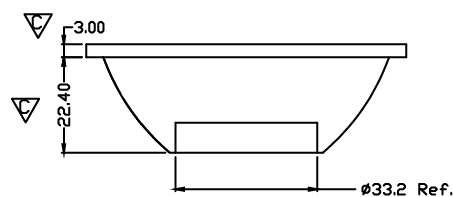
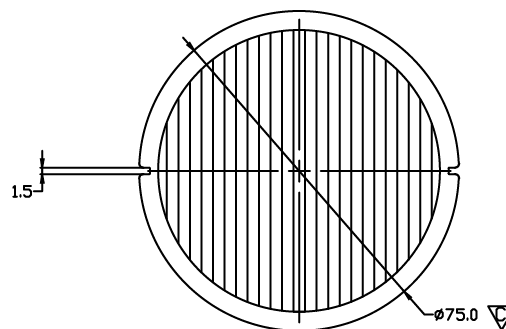
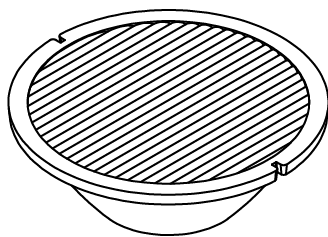


- A. Chun Kuang Optics Corp. Product
- B. Product Type: product abbreviation
Ex:
CH→CoB High Intensity
CC→CoB Compact
CS→Soft Shading for CoB LED
HC→Holder for CoB LED

- C. Identity Code
- D. Lens / Fixture Size
Ex: 075026=Φ75mm / Thickness=26mm (round up)
- E. Serial Numbers

The lens datasheet is applicable for **Luminus LED**, that manufactured by Chun Kuang Optics Corp.

✓ Dimensions (mm) : Φ75 x 25.4



▽:Critical Dimension



✓ Optical Characteristics – Angle Performances

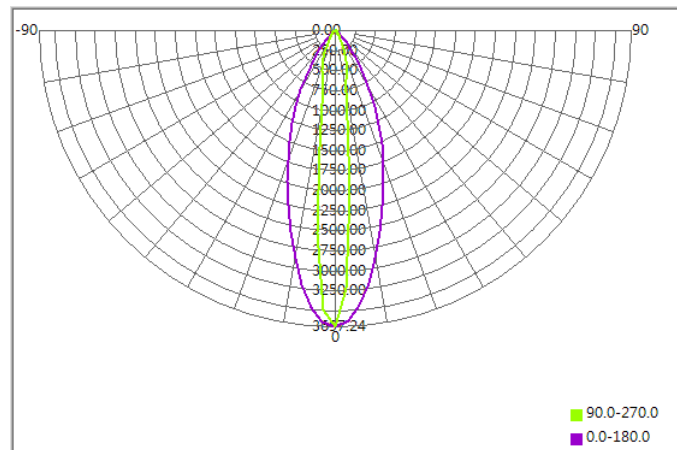
Luminus	LED LES (mm)	FWHM (degrees)	Field Angle (degrees)
CXM-9-AC30	Φ9.6	12°x38°	44°x76°
CXM-9-AC40	Φ9.8	13°x38°	45°x76°
CXM-11-AC30	Φ11.7	14°x40°	48°x78°
CLM-14-AC40	Φ14.5	18°x41°	52°x79°



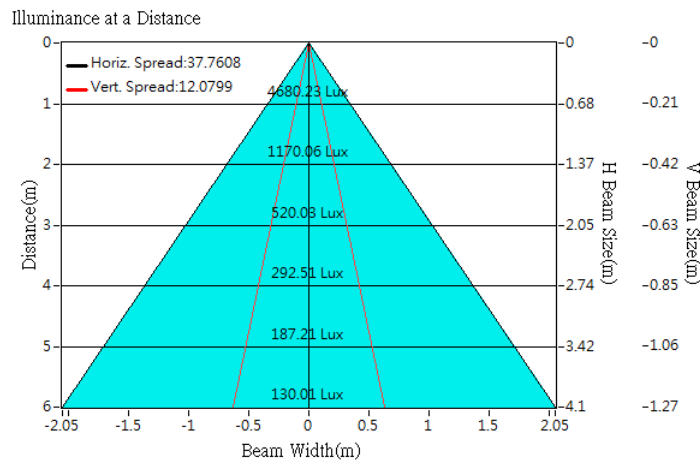
Optical Characteristics

Model Number	CKO-SA20-075026-0407		<p>"H" definition</p>
LED	CXM-9-AC30		
LES / LED Size	Φ 9.6 mm		
FWHM (D50)	12°x38°		
Field Angle (D10)	44°x76°		
H (distance)	3.65 mm		
Dimension	Φ =45 mm, Thickness=20.9 mm		
Luminous Flux	1265 lm	Measured @ 12.1 W	
Material	PC / UL94V2		

cd/klm



Illuminance At Distances

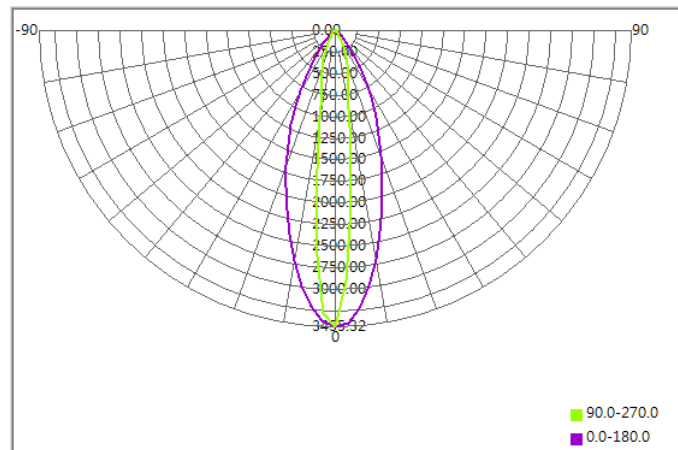




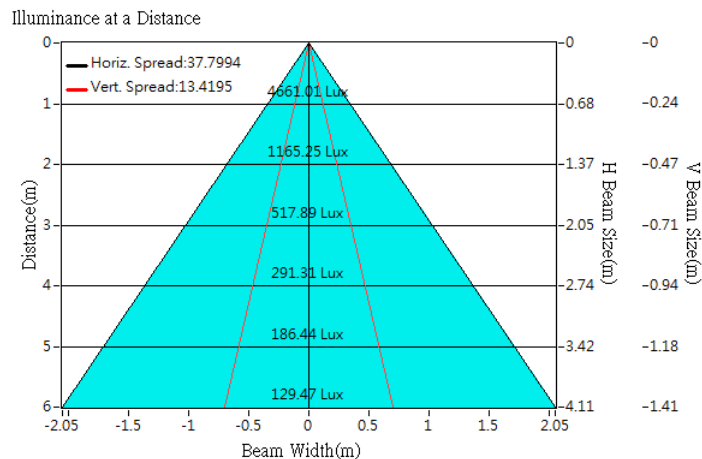
Optical Characteristics

Model Number	CKO-SA20-075026-0407		<p>"H" definition</p>
LED	CXM-9-AC40		
LES / LED Size	Φ 9.8 mm		
FWHM (D50)	13°x38°		
Field Angle (D10)	45°x76°		
H (distance)	3.65 mm		
Dimension	Φ =75mm, Thickness=25.4 mm		
Luminous Flux	1357 lm	Measured @ 12.1 W	
Material	PC / UL94V2		

cd/klm



Illuminance At Distance

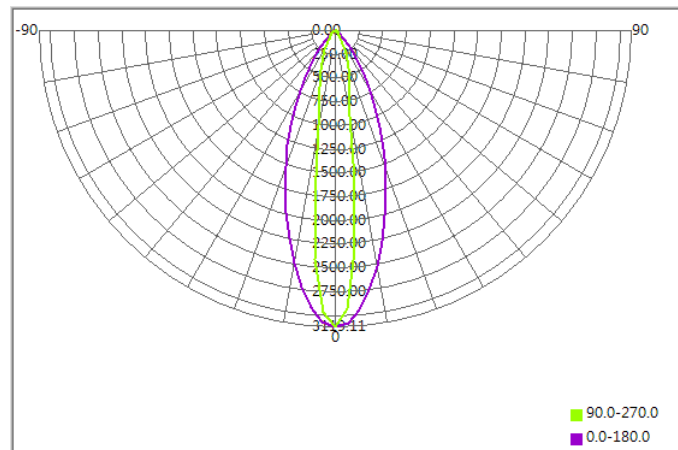




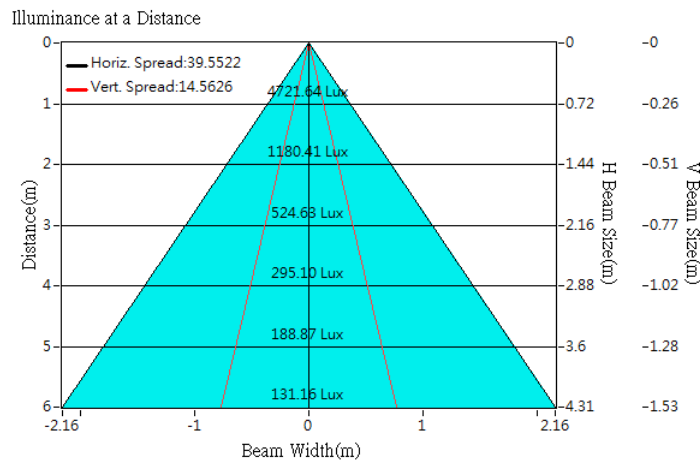
Optical Characteristics

Model Number	CKO-SA20-075026-0407		<p>"H" definition</p>
LED	CXM-11-AC30		
LES / LED Size	Φ 11.7 mm		
FWHM (D50)	14°x40°		
Field Angle (D10)	48°x78°		
H (distance)	3.65 mm		
Dimension	Φ =45 mm, Thickness=20.9 mm		
Luminous Flux	1513 lm	Measured @ 15.4 W	
Material	PC / UL94V2		

cd/klm



Illuminance At Distances

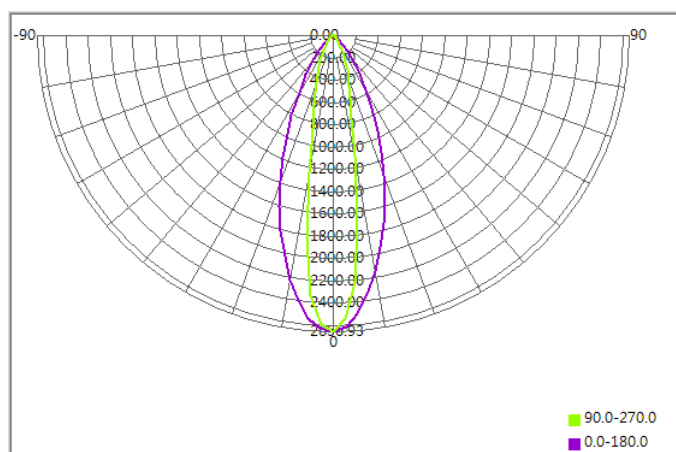




Optical Characteristics

Model Number	CKO-SA20-075026-0407		<p>"H" definition</p> <p>LES CoB</p>
LED	CLM-14-AC40		
LES / LED Size	Φ 14.5 mm		
FWHM (D50)	18°x41°		
Field Angle (D10)	52°x79°		
H (distance)	3.65 mm		
Dimension	Φ =75 mm, Thickness=33 mm		
Luminous Flux	2318 lm	Measured @16.7 W	
Material	PC / UL94V2		

cd/klm



Illuminance At Distances

