



## Product Model Number

CKO-SA20-075026-0411

### ✓ Model Number Definitions

**CKO-XXXX-XXXXXX-XXXX**

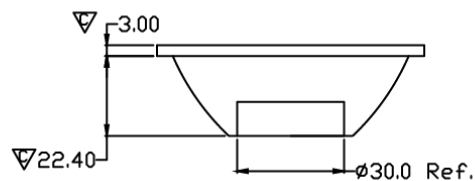
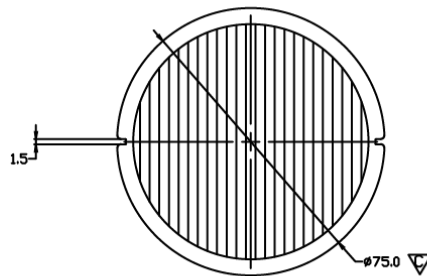
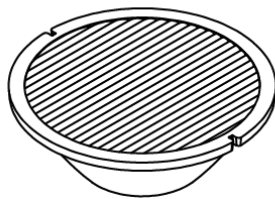


- A. Chun Kuang Optics Corp. Product
- B. Product Type: product abbreviation  
Ex:  
CH→CoB High Intensity  
CC→CoB Compact  
CS→Soft Shading for CoB LED  
HC→Holder for CoB LED

- C. Identity Code
- D. Lens / Fixture Size  
Ex: 075026=Φ75mm / Thickness=26mm (round up)
- C. Serial Numbers

The lens datasheet is applicable for **Luminus LED**, that manufactured by Chun Kuang Optics Corp.

### ✓ Dimensions (mm) : Φ75 x 25.4



▽:Critical Dimension

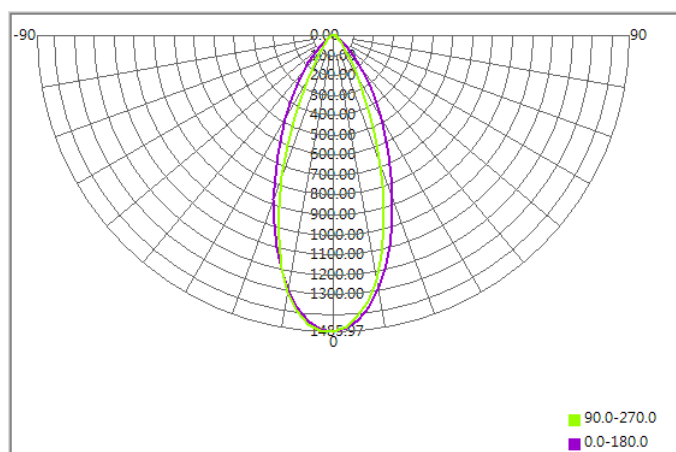




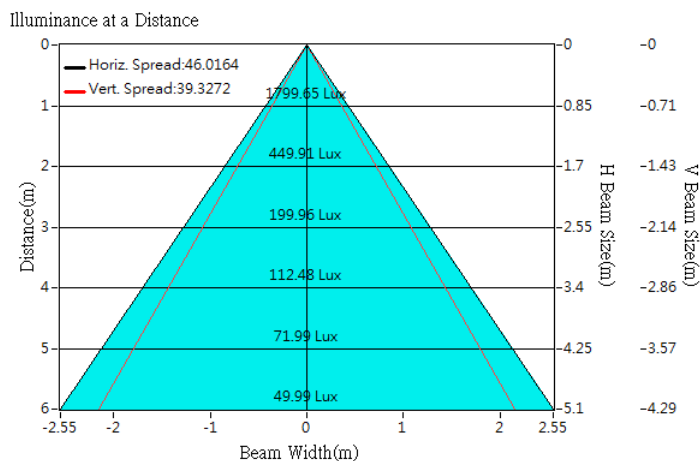
## Optical Characteristics

Model Number	CKO-SA20-075026-0411		<p>"H" definition</p>
LED	<b>CXM-9-AC30</b>		
LES / LED Size	Φ 9.6 mm		
FWHM (D50)	39°x46°		
Field Angle (D10)	70°x90°		
H (distance)	3.65 mm		
Dimension	Φ =45 mm, Thickness=20.9 mm		
Luminous Flux	1211 lm	Measured @ 12.1 W	
Material	PC / UL94V2		

## cd/klm



## Illuminance At Distances



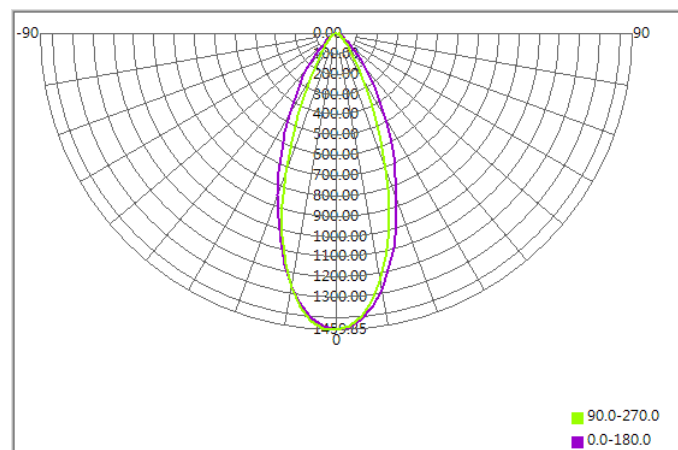




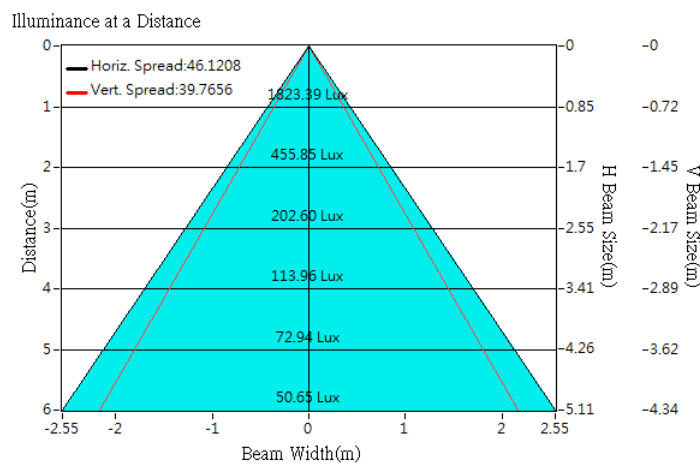
## Optical Characteristics

Model Number	CKO-SA20-075026-0411		<p>"H" definition</p>
LED	<b>CXM-9-AC40</b>		
LES / LED Size	Φ 9.8 mm		
FWHM (D50)	40°x46°		
Field Angle (D10)	71°x90°		
H (distance)	3.65 mm		
Dimension	Φ =75mm, Thickness=25.4 mm		
Luminous Flux	1249 lm	Measured @ 12.4 W	
Material	PC / UL94V2		

## cd/klm



## Illuminance At Distances

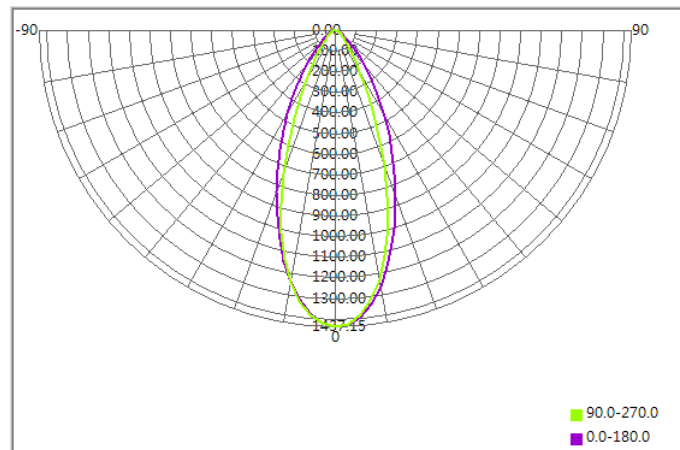




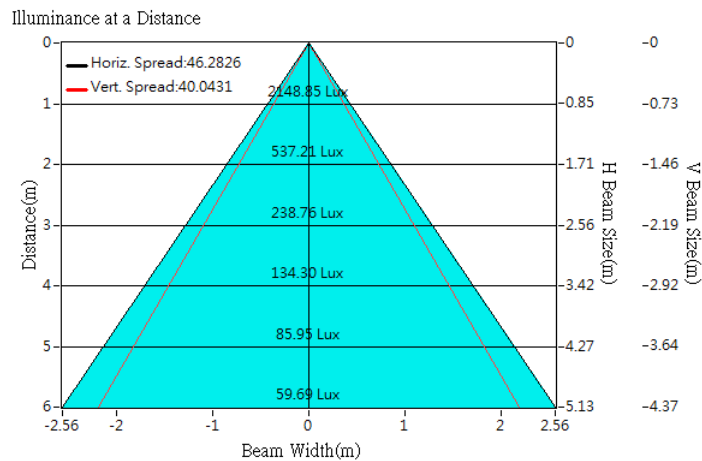
## Optical Characteristics

Model Number	CKO-SA20-075026-0411		<p>"H" definition</p>
LED	<b>CXM-11-AC30</b>		
LES / LED Size	Φ 11.7 mm		
FWHM (D50)	40°x46°		
Field Angle (D10)	72°x91°		
H (distance)	3.65 mm		
Dimension	Φ =45 mm, Thickness=20.9 mm		
Luminous Flux	1495 lm	Measured @ 15.5 W	
Material	PC / UL94V2		

## cd/klm



## Illuminance At Distances

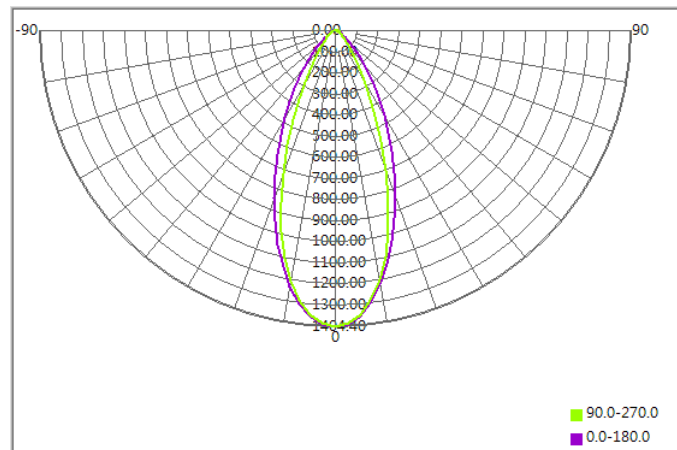




## Optical Characteristics

Model Number	CKO-SA20-075026-0411		<p>"H" definition</p>
LED	CLM-14-AC40		
LES / LED Size	Φ 14.5 mm		
FWHM (D50)	40°x47°		
Field Angle (D10)	75°x91°		
H (distance)	3.65 mm		
Dimension	Φ =75 mm, Thickness=33 mm		
Luminous Flux	2276 lm	Measured @16.7 W	
Material	PC / UL94V2		

## cd/klm



## Illuminance At Distances

